

THE SPIRIT OF NEBRASKA

A CAPITOL MURAL
BY REINHOLD MARXHAUSEN

NEBRASKA STATE CAPITOL
OFFICE OF THE CAPITOL COMMISSION

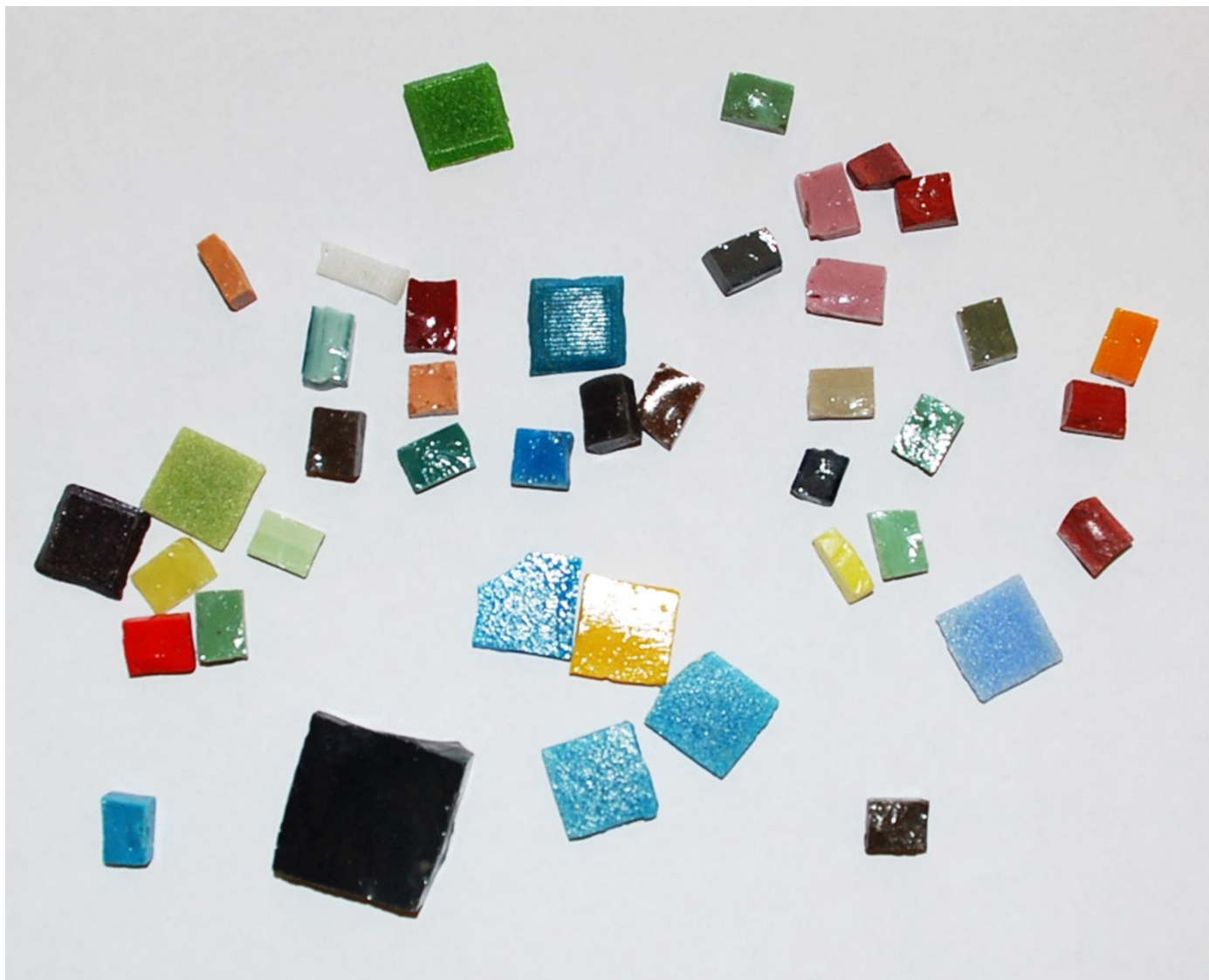
TO CELEBRATE NEBRASKA'S
CENTENNIAL IN 1967,
NEBRASKANS COMMISSIONED
SIX MURALS TO FILL THE EMPTY
SPACES ON THE WALLS OF THE
GREAT HALL IN THE CAPITOL. A
NEBRASKA ARTIST, REINHOLD
MARXHAUSEN, WAS CHOSEN TO
CREATE TWO OF THE MURALS.
ONE OF HIS MOSAICS IS:

THE SPIRIT OF NEBRASKA

THE SPIRIT OF NEBRASKA BY REINHOLD MARXHAUSEN



MARXHAUSEN USED PIECES OF VENETIAN AND BYZANTINE GLASS IN THE MURAL.



MARXHAUSEN ALSO USED PIECES OF WOOD, BRICK, ROCKS AND CERAMIC TILES TO CREATE PARTS OF HIS MOSAIC.

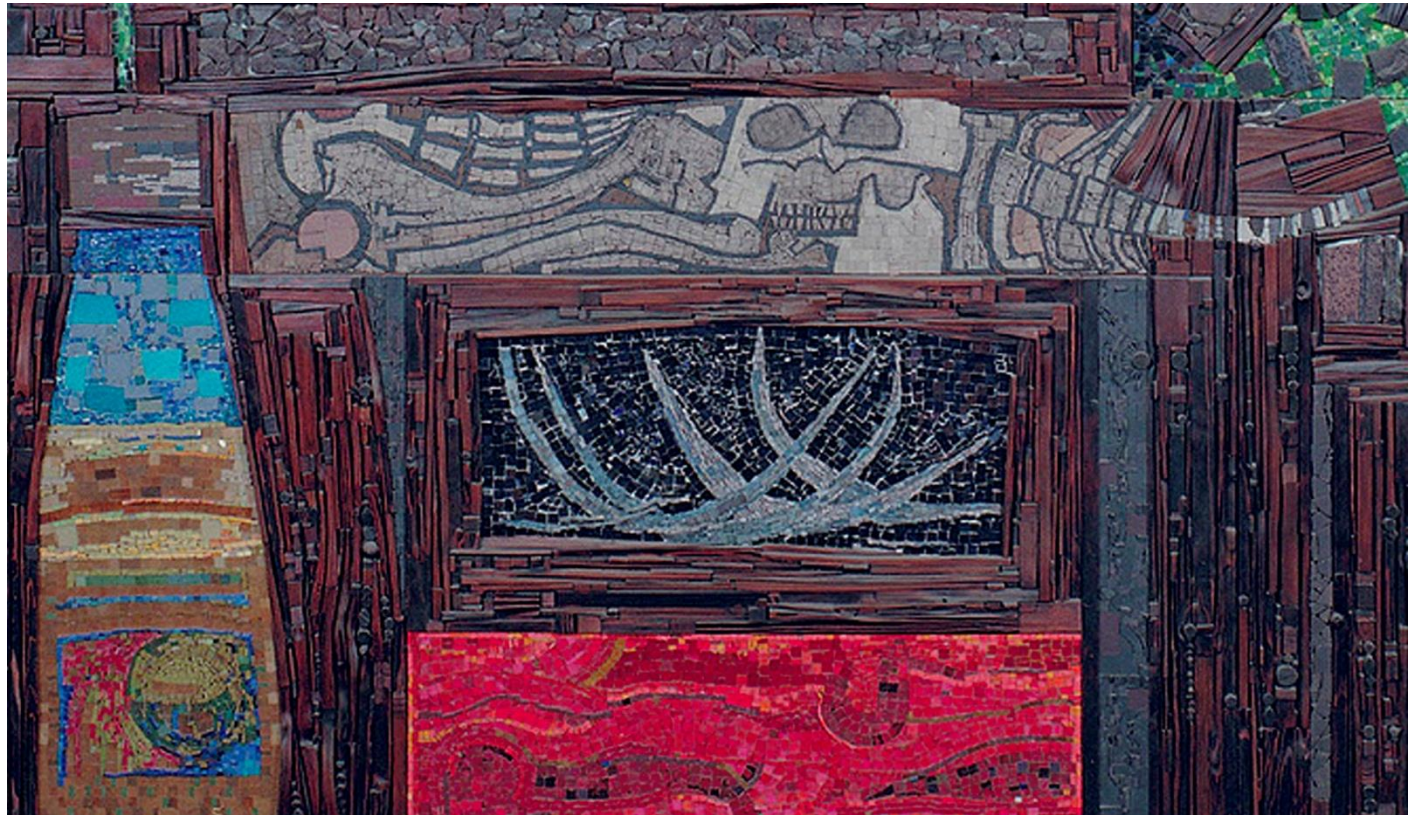


THE MURAL REPRESENTS THE GROWTH AND DEVELOPMENT OF NEBRASKA



THE CENTRAL
PART OF THE
MURAL
REPRESENTS
NEBRASKA AS A
CROSS SECTION
OF THE EARTH.





AT THE BOTTOM A LARGE SECTION OF
RED AND ORANGE GLASS TILE
SYMBOLIZES THE MOLTEN MAGMA AT
THE CENTER OF THE EARTH.

A BLUE SECTION REPRESENTS THE AQUIFER WHICH SUPPLIES WATER FOR AGRICULTURE AND DRINKING.

THE TANS AND BROWNS REPRESENT SANDSTONE AND LIMESTONE LAYERS BENEATH THE SOIL. SEDIMENTS FROM THE INLAND SEA WHICH ONCE COVERED THE REGION.



BROWN, BLACK AND GRAY LAYERS REPRESENTS THE FOSSILS OF ANCIENT CREATURES FOUND IN NEBRASKA, INCLUDING THE WOOLY MAMMOUTH, NEBRASKA'S STATE FOSSIL.



ABOVE THE EARTH'S
CENTER THE CRUST
APPEARS BROKEN
INTO PIECES. EARLY
PIONEERS BROKE
THE PRAIRIE SOD
WITH THEIR PLOWS
TO READY THE
LAND FOR
AGRICULTURAL
GROWTH AND
DEVELOPMENT.





ACROSS THE TOP OF THE MURAL



COLORS CHANGE TO SHOW NEBRASKA THROUGH THE SEASONS

WINTER

SPRING

SUMMER

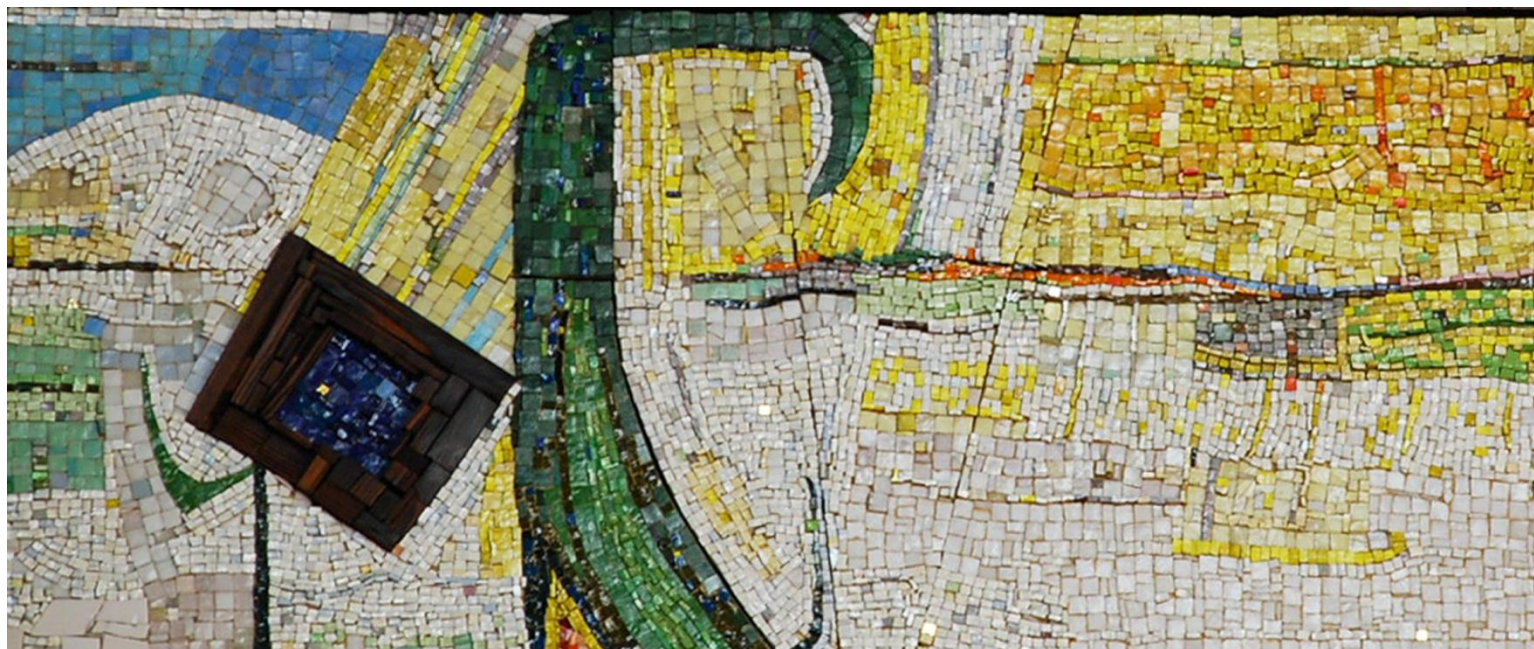
FALL





WINTER SNOW COVERS THE LAND

WINTER SNOW IS CREATED WITH WHITE TILE. SNOW DRIFTS UNDER THE BRIGHT BLUE SKY. THE WINTER SUN SPARKLES YELLOW ON THE SNOW.



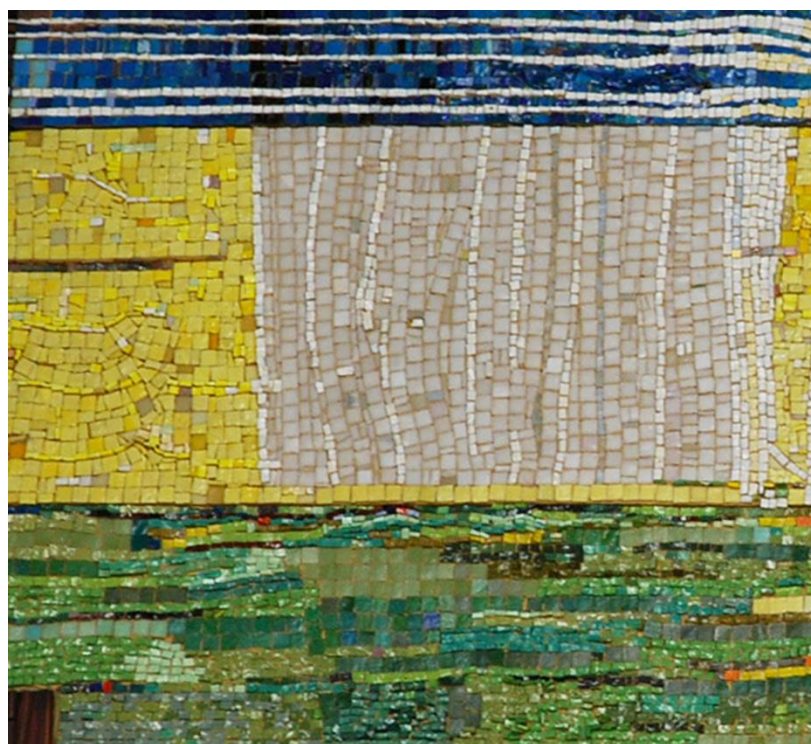


SPRING WARMS THE EARTH

YELLOW TILES SHINE LIKE THE
SUN ENCOURAGING PLANTS TO
BREAK FROM THEIR REST AND
GROW.

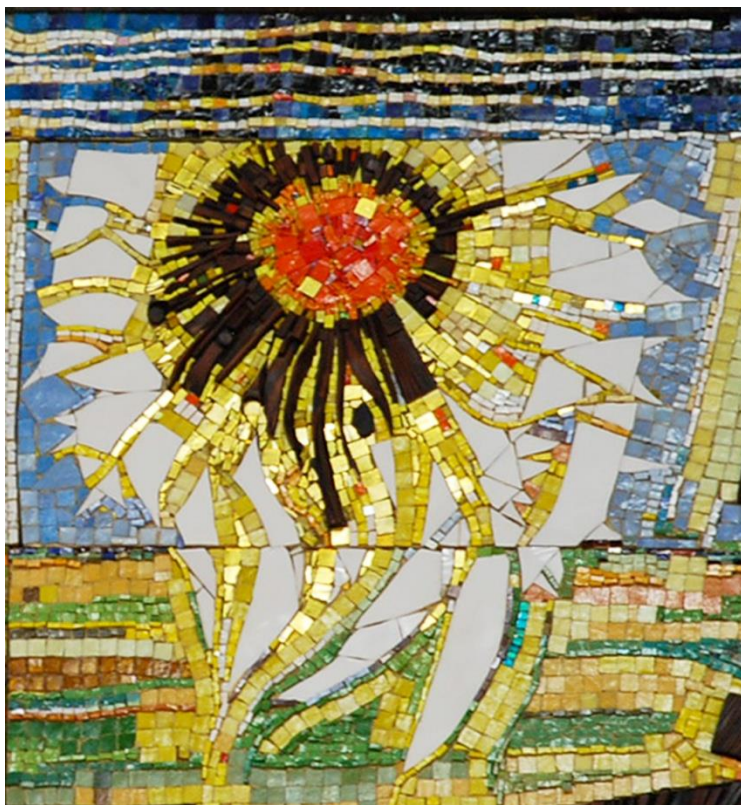
GRAY AND WHITE TILES FALL LIKE
RAIN FROM THE SKY TO WATER
THE YOUNG PLANTS OF SPRING.

GREEN TILES VARY IN COLOR
AND SHAPE LIKE THE MANY
TREES, GRASSES AND CROPS OF
NEBRASKA SPROUTING IN SPRING.





SUMMER SUN SHINES ON THE LAND



THE SUN SHINES IN A PALE BLUE SUMMER SKY
LIKE A HUGE SUNFLOWER IN A SEA OF GRASS.
WHITE TILE CLOUDS FLOAT IN THE WIND.

AS CROPS AND PRAIRIE GRASSES MATURE THE
LAND TURNS FROM GREEN TO GOLDEN.

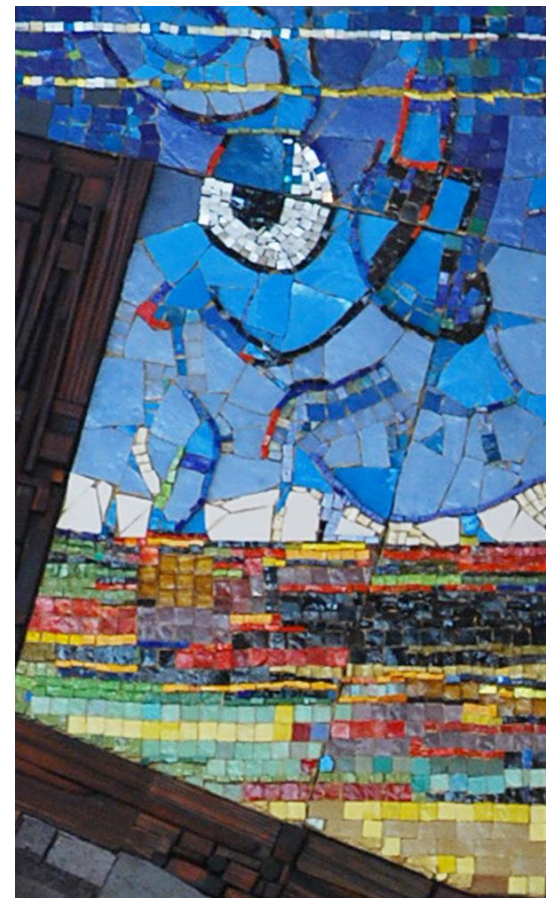


FALL COLORS APPEAR

BRISKLY BLOWING NORTH WINDS MOVE SWIRLING BLACK TILE LINES THROUGH THE BRIGHT BLUE COLORS OF THE FALL SKY.

WHITE TILES CREATE A FULL MOON TO PROVIDE LIGHT FOR THE HARVEST AS THE DAYS GROW SHORTER.

RED, ORANGE AND YELLOW TILES ARE SCATTERED LIKE LEAVES BLOWN FROM THE TREES OF NEBRASKA. THE BLACK SOIL IS BARE AFTER HARVEST AND READY FOR REST DURING WINTER.



TO REPRESENT
THE SPIRIT OF NEBRASKA,
REINHOLD MARXHAUSEN
LOOKED TO NEBRASKA'S
FOUNDERS AND SETTLERS
FOR INSPIRATION. THEIR
HARD WORK GAVE HIM
ARTISTIC IDEAS.





ONE SIDE OF THE MOSAIC REPRESENTS THE HARD WORK AND STUBBORN DETERMINATION OF NEBRASKANS WHO BUILT A PRODUCTIVE AGRICULTURAL STATE FROM A VAST TREELESS PRAIRIE.

A LARGE PLANT FILLS THE LEFT SIDE OF THE PANEL WITH ITS ROOTS GROWING DOWN INTO THE DARK BROWN SOIL. ONE ROOT BENDS TOWARD THE LIFE GIVING GROUNDWATER. A SPROUTING PLANT PUSHES UP THE SOIL LAYER AT THE TOP.

IN THE BOTTOM CORNER,
WORKING HANDS KNEAD BREAD.
NEBRASKA'S FARMERS PRODUCE
FOOD TO FEED THE NATION AND
THE WORLD.

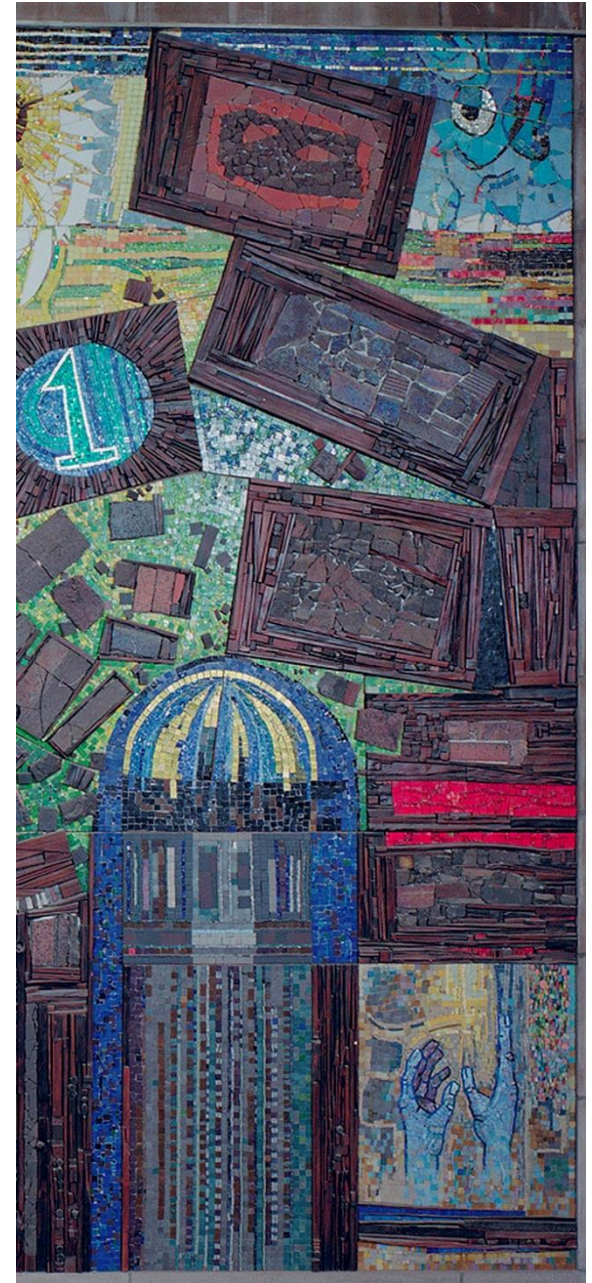




THE OTHER SIDE OF THE MOSAIC REPRESENTS THE HARD WORK AND STUBBORN DETERMINATION OF NEBRASKANS TO BUILD A STATE BASED ON NEW IDEAS FOR GOVERNMENT.

THE NUMBER ONE RISING FROM THE SOIL REPRESENTS THE UNIQUE ONE HOUSE UNICAMERAL LEGISLATURE NEBRASKANS ADOPTED IN THE 1930'S.

NEBRASKA'S THIRD CAPITOL, THE FIRST IN THE NATION TO BE BUILT WITH SKYSCRAPER TECHNOLOGY, PUSHES UP THROUGH THE EARTH.





IN THE BOTTOM RIGHT CORNER,
HOPEFUL HANDS REACH UP
WITH FAITH THAT NEBRASKANS
CAN WORK TOGETHER AS
CITIZENS TO BUILD A NOBLE LIFE.



THE SPIRIT OF NEBRASKA BY REINHOLD MARXHAUSEN

