

NEBRASKA CAPITOL COURTYARD PROJECT DONORS

Ernst H. Herminghaus
Courtyard Landscape
Restoration Project
2019 - 2020



Nebraska Association of
Former State Legislators
&
The Office of the
Capitol Commission



NEBRASKA ASSOCIATION OF FORMER STATE LEGISLATORS

The Nebraska Association of Former State Legislators (NAFSL) was formed in 1976 by a group of former state Legislators headed by Ross H. Rasmussen, Jack Romans, and William Brandt with the objectives of keeping former members of Nebraska's legislature in touch with each other, honoring those who are deceased, and supporting worthwhile projects.

The membership of the NAFSL includes all former members of Nebraska's legislature.

The Association has supported completion of the Nebraska State Capitol's design with the installation of fountains in the courtyards and restoration of the gardens in those courtyards.

The Association has promoted legislation to clarify the responsibilities of the state agency charged with oversight of the Capitol, and sought reliable revenue streams for operation and maintenance of the Capitol.

The Association has also promoted public access to the Capitol by working to assure that public parking spaces are available adjacent to the building.

The Association will continue to initiate and support efforts related to the use, restoration, maintenance, and enhancement of the Capitol.

OFFICE OF THE CAPITOL COMMISSION

The Office of the Capitol Commission, the administrative and operational arm of the Nebraska Capitol Commission, is staffed by highly skilled professionals who maintain the Nebraska State Capitol and Grounds as the seat of Nebraska's three branches of State Government. In addition to providing the functional setting for the Executive, Legislative and Judicial branches, the Nebraska Capitol and Grounds are a Landmark on the National Register of Historic Places. As such, the Capitol attracts thousands of visitors a year. Visitors are provided free guided tours of the ornate interior spaces and learn about the history, construction and ongoing preservation and maintenance of the Capitol. Within the Office of the Capitol Commission staff are grounds keepers and arborists who care for the landscape surrounding the building. In addition to the grounds shop, there is a maintenance shop, a custodial shop, a carpenter shop, a restoration and refinishing shop and an archivist. The administrative personnel include preservation architects, a project manager, a facilities coordinator, a Capitol manager coordinating the shops, a Public Information Officer to oversee tourism and promotion of the Capitol, and the Capitol Administrator who oversees all projects and staff duties. The Capitol Administrator reports to the Nebraska Capitol Commission composed of the Governor, the Speaker of the Legislature, the Chief Justice, the Dean of the University of Nebraska-Lincoln College of Architecture, the executive director of the State Historical Society, and one member appointed by the Governor from each of Nebraska's three congressional districts.



HISTORY OF THE CAPITOL SITE

When the state capital was moved from Omaha to the Village of Lancaster in 1867 there were 40 people living on the open prairie in the small community centered at modern day 10th and P Street. The original plat of Lincoln expanded the size of the community to an area from A Street to Vine Street and 1st to 17th Streets. The highest elevation, a knoll at the intersection of 15th and J Streets, was chosen for the site of the Capitol. Three Capitol's have stood on the site. The first stood from 1868-1888, the second from 1888-1925. The third and current Capitol, designed by New York architect Bertram Grosvenor Goodhue, was constructed between 1922 and 1932, with the landscape completed in 1934.



The site was treeless prairie when the first Capitol was built in 1868. Trees were soon planted inside the perimeter picket fence.



The second Capitol's landscape included paved walks, retaining walls and an assortment of deciduous and coniferous trees.

HISTORY OF THE CAPITOL LANDSCAPE

While Goodhue, the Capitol's architect, made his ideas on a proper landscape setting for the building known, no formal plans were created before his untimely death in 1924. It wasn't until October 1933 after the building was completed that the Capitol Commission overseeing construction turned to the landscape. At that time the Goodhue Associates submitted a conceptual plan for beautification of the Capitol Grounds and Courtyards. The Commission adopted the plans and reserved the ability to modify them as needed. They then appointed a committee to consider employing a resident landscape architect in an advisory capacity to superintend planting of trees and shrubs and such other work as may be associated with it. In November of 1933 Ernst H. Herminghaus, landscape architect, was employed to prepare working plans and specifications, consider bids, and supervise the work associated with the landscaping, planting and maintenance of the Capitol Grounds and Courtyards. Bids for trees, shrubs and other plants were taken in January and February of 1934 and planting was completed by May of 1934.



ERNST H. HERMINGHAUS LANDSCAPE ARCHITECT

Best known for the Nebraska Capitol landscape, Ernst H. Herminghaus was born in Lincoln, in 1890. He graduated from Lincoln High School and studied horticulture at the University of Nebraska. Continuing his education at the Harvard Graduate School of Design, he studied under Frederick Law Olmsted, Jr. and in 1915 received a Landscape Architecture degree.

Returning to Lincoln with a Beaux-Arts sensibility, he became Nebraska's first practicing landscape architect designing residential and public landscapes including the Woodshire and Rathbone subdivisions. Herminghaus enhanced Lincoln's park system designing Pioneers Park and Pinewood Bowl. Later he was on the faculty of the University of Nebraska Architecture School teaching landscape history and design. Herminghaus served in both World Wars planning and designing military facilities. Throughout his life he was involved with landscape design across the United States and overseas. He traveled in his later years and died in Connecticut in 1965.

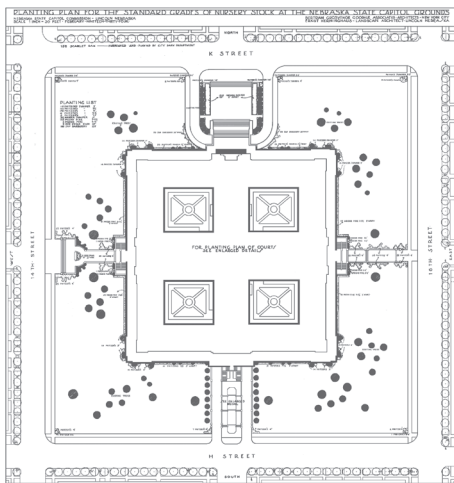
LANDSCAPE PLAN

Once employed to oversee the landscape installation at the Nebraska State Capitol, Herminghaus prepared a landscape plan that would become the setting for architect Bertram G. Goodhue's Capitol. With Goodhue's landscape ideas and Herminghaus knowledge of Nebraska's climate and plant material, Herminghaus created a plan and planting list which utilized Nebraska nursery stock and created a landscape that contributes to the interpretation and appreciation of the building. Herminghaus addressed Goodhue's concern that the Capitol not appear too large for its site by planting a border of oak trees on the opposite side of the street from the building, visually enlarging the site. Graduated rows of evergreen trees were planted flanking the north and south entrances, the tallest near the street and the shortest near the building, thus creating a false perspective to visually elongate these entrance approaches.

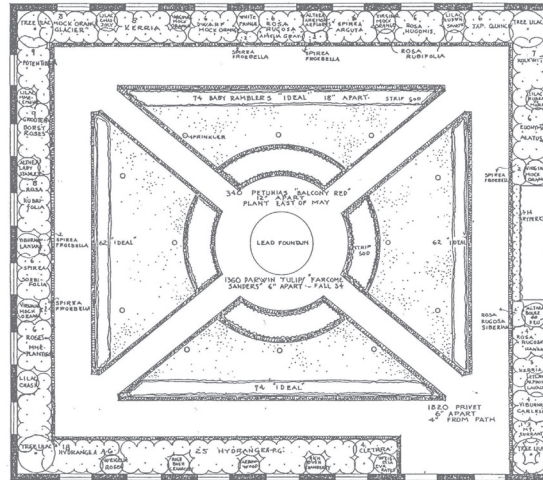
The simplicity of the Capitol's architecture and uniform color required the landscape not compete for the viewer's attention. Evergreen trees and shrubs at the foundation provide year-round color and mass at the building's base. The varied arrangement of deciduous trees on each side of the grounds provides summer shade and seasonal color and frame views of the building. In the four interior courtyards, Herminghaus' colorful formal designs, based on his Beaux-Arts training, delighted staff and visitors in the Capitol. The interior courtyards are focal points for viewers in offices and corridors. These colorful gardens are filled with flowering shrubs, roses and bordered beds of seasonal annuals, tulips and petunias. The Herminghaus' landscape plan serves as a living document used by Capitol staff to monitor and maintain the landscape, preserving his vision for the Capitol's grounds.



LANDSCAPE PLANS



Ernst H. Herminghaus landscape plan for the Nebraska State Capitol showing the location of trees and shrubs on the exterior grounds.



Ernst H. Herminghaus landscape plan for each Capitol courtyard utilizes a variety of flowering shrubs and different colors of annuals to provide a unique appearance within a similar framework.



COURTYARD FOUNTAINS

Designed but not installed when the Capitol was completed in 1932, the courtyard fountains were cast and dedicated in 2017 to celebrate Nebraska's Sesquicentennial. With a 2013 budget appropriation, the Nebraska Unicameral Legislature provided the Office of the Capitol Commission funds to cast in bronze the fountains designed by Goodhue's Associates. Fountain installation required the excavation of underground vaults for the system's infrastructure. Shallow pools ringed with granite hold water cascading from the water conserving fountain's bowl. The bronze fountains enhance each courtyard.

Capitol thematic consultant, Hartley Burr Alexander, PhD., used Native American symbolism throughout the building and that symbolism is carried into the courtyards. On the exterior face of each bowl at compass points are eight diamond panels with icons for water created by Nebraska's First Peoples. Colors which the First Peoples often associate with the seasons or the cardinal directions line each fountain, red, blue, white and yellow. The Venetian glass tile used in each bowl, and the unifying gold Venetian glass tile at the center of each, were made possible by a generous anonymous Nebraska donor.

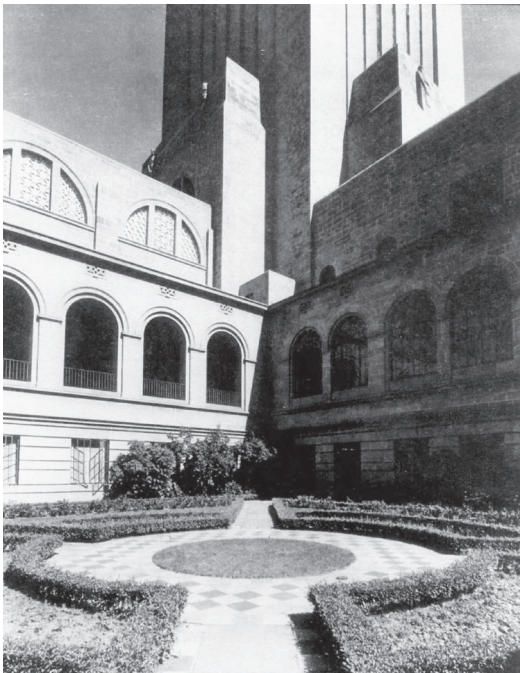


COURTYARD LANDSCAPE FUNDRAISING PROJECT



The Nebraska Association of Former State Legislators began a private fundraising campaign to restore the Capitol's four courtyards to their original Ernst H. Herminghaus landscape design following the 2017 Sesquicentennial dedication of the courtyard fountains.

With generous donations from foundations, businesses and many individuals, the Association raised the funds for the initial landscape restoration and raised an additional one million dollars for an endowment. Endowment proceeds will be used for annual maintenance and the purchase of future plant material, including annuals and replacement shrubs. This important endowment ensures there will be funds available for the ongoing care of the plant material and annual planting that will keep the courtyards beautiful for generations to come.



The northeast courtyard soon after Herminghaus' original landscape was planted in 1934. The intended fountain was not installed.



The northeast courtyard with fountain installed and running in 2017. The original planting design of Herminghaus not yet restored.

COURTYARD LANDSCAPE DONOR RECOGNITION



DONOR RECOGNITION LEVELS

Courtyard Champion: \$500,000 or more

Courtyard: \$200,000 - \$500,000

Sower: \$100,000 - \$200,000

Rotunda: \$75,000-\$99,999

Supreme Court: \$50,000-\$74,999

Governor's Hall: \$30,000-\$49,999

West Chamber Society: \$15,000-\$29,999

Friends of the Capitol Courtyards: \$1,000-\$14,999

Meadowlark Society: Under \$1,000

Senator's Club

All State Senators, current and former,
donating \$1,000 or more

*All donations are recognized on the Nebraska Capitol website
(capitol.nebraska.gov) and in the Capitol Courtyard Donor Book at
the Information Desk located on the first floor of the State Capitol.*



FINISHING THE
CAPITOL COURTYARD GARDENS

Donors By Category

COURTYARD CHAMPION

\$500,000 or more

The Acklie Charitable Foundation



*Image copyright: Altitude Motion Media
Used with permission*



FINISHING THE
CAPITOL COURTYARD GARDENS

Donors By Category

COURTYARD

\$200,000 - \$500,000

Glenn H. Korff Foundation

Lancaster County Visitors
Improvement Fund



Tower View from Courtyard



FINISHING THE
CAPITOL COURTYARD GARDENS

Donors By Category

SOWER

\$100,000 - \$200,000

The Dillon Foundation



Lee Lawrie's Sower



FINISHING THE
CAPITOL COURTYARD GARDENS

Donors By Category

ROTUNDA

\$75,000-\$99,999

Campbell's Nursery

Ethel S. Abbott Charitable Foundation

Friends of the NE150 Foundation



Flowering tree rotunda floor



FINISHING THE
CAPITOL COURTYARD GARDENS

Donors By Category

WEST CHAMBER SOCIETY

\$15,000-\$29,999

Rhonda Seacrest

Union Pacific Foundation



Hollyhocks West Chamber ceiling



FINISHING THE
CAPITOL COURTYARD GARDENS

Donors By Category

FRIENDS OF THE CAPITOL COURTYARD \$1,000-\$14,999

Mike and Pam Boyle

Bruning State Bank

Cornerstone Bank and the Holthus Family

Cornhusker Bank

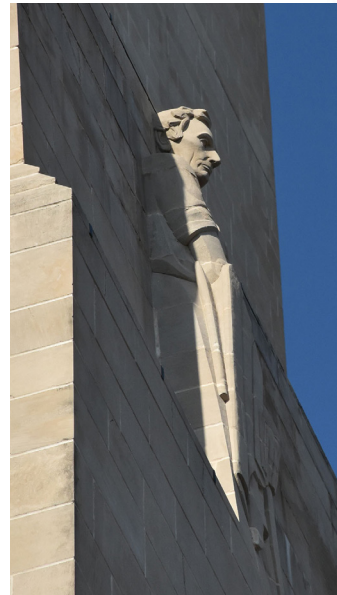
Alice Dittman

Willa Herminghaus Dyche

Secretary of State John Gale

James Goeke and Karen Amen

John F. and Valeria Herminghaus



Tower Lincoln from Courtyard

J.C. & Jessie Seacrest Family Foundation Trust

Virginia G. and Kile Johnson

Lincoln Community Foundation

Judge Jean Lovell

Martin and Ruth Massengale

Nebraska Broadcasters Association Foundation

Nebraska Impact

NebraskaLand Foundation

Patrick J. O'Donnell (In honor of Gina C. Dunning)

Pinnacle Bancorp

Roellyn Salac Memorial (Gift of Salac Family)

Jon Sampson

Edward Tricker



FINISHING THE
CAPITOL COURTYARD GARDENS

Donors By Category

SENATOR'S CLUB

All State Senators, current and former
\$1,000 or more

In Memory of Fred Abboud

by Former State Senator Chris Abboud
Former State Senator Greg and Julie Adams
Former State Senator Brad Ashford
Former State Senator Tom Baker
Former State Senator Doug and Louise Bereuter
Former State Senator Chris and Judy Beutler
Former State Senator Curt and Vicki Bromm
State Senator Patty Pansing Brooks
Former State Senator Dennis and Janet Byars
Former State Senator Kathy Campbell
Former State Senator Helen and Floyd Campbell
Former State Senator Tom and Margo Carlson
State Senator Robert Clements
State Senator Sue Crawford



*Public Service
Foyer Ceiling Mosaic*

Former State Senator Al and Dottie Davis

(In honor of Jean V. Davis &
Dorothy C. Glenn)

State Senator Myron and Julie Dorn

In Memory of Former State Senator Donald Dworak
From Judy Dworak

Former State Senator Richard Fellman

In Memory of Former State Senator E.H. Gerhart
From The Gerhart Family of Newman Grove

In Memory of Former State Senator
H.L. "Buzz" Gerhart

From The Gerhart Family of Newman Grove

Former State Senator Mike Gloor

Former State Senator Galen and Marilyn Hadley

Former State Senator Tim Hall

Former State Senator Gary and Mary Lou Hannibal

In Memory of Former State Senator Bill Harris
from MarySue Harris

Former State Senator Joyce Hillman-Kortum

State Senator Robert Hilkemann

State Senator Dan Hughes

State Senator Megan Hunt

Former State Senator James and Joan Jensen

Former State Senator Stephanie Johanns

Former State Senator Gerald Johnson

Former State Senator Dr. Joel and Jill Johnson

State Senator Dr. Rick Kolowski
State Senator Mark Kolterman
Former State Senator John Lindsay
Former State Senator Gerald and Lee-Ellen Matzke
State Senator John McCollister
Former State Senator Vickie McDonald
State Senator Mike McDonnell
Former State Senator Jack and Norma Mills
Former State Senator Scott and Danene Moore
State Senator Adam Morfeld
Former State Senator John and Judy Nelson
In Memory Of Former State Senator
 David R. Newell
 From Arlene, Sarah & John Newell
Former State Senator Donald Pederson
Former State Senator Marian Price
State Senator Dan Quick
In Memory of Former State Senator
 Ronald E. Raikes from Helen Raikes
In Memory of Former State Senator
 Ross H. Rasmussen from His Daughters
Former State Senator Pam Redfield
In Memory of Former State Senator Jennie Robak
 From Lt. Governor Kim Robak
 and William Mueller
Former State Senator Kent Rogert

State Senator Jim and Kris Scheer
Former State Senator DiAnna and Herb Schimek
Former State Senator Sandy Scofield
State Senator John Stinner
Former State Senator Larry and Janice Stoney
Former State Senator Elaine and Boyd Stuhr
Former State Senator Arnie Stuthman
Former State Senator Kate Sullivan
Former State Senator Deborah
 and Mayor James Suttle
In Memory of Former State Senator Dennis Utter
 from Kathy Utter
Former State Senator Donald Wagner
Former State Senator Norman Wallman
Former State Senator Roger Wehrbein
Former State Senator Bob Wickersham
In Memory of Former State Senator John Wightman
 From Janet Wightman and Family
State Senator Matt Williams



FINISHING THE
CAPITOL COURTYARD GARDENS

Donors By Category

MEADOWLARK SOCIETY

Under \$1,000

Robert and Kathleen Achterberg

State Senator John Arch

In Memory of Former State Senator

Ardyce Linn Bohlke by Sharon Marvin Griffin

Catalyst Public Affairs

Marvin Igel

Larry and Nancy Bare

State Senator Kate Bolz

Joanne Brown

Linda Brown

Former State Senator Jon Bruning

Jeff Buettner

Former State Senator Carroll Burling

Supreme Court Judge William B. and Audrey Cassel

State Senator Ernie Chambers



Meadowlark Rotunda onyx railing

In Memory of Carl & Julia Cheloha

From John A. Cheloha

Former State Senator Danielle and Tom Conrad

Former State Senator Gerald Conway

Former State Senator Jim Cudaback

Nancy Davis

State Senator Wendy DeBoer

Former State Senator Annette Dubas

Former State Senator L. Patrick and Dee Engel

In Memory of Dee Engel by "The Chicks"

Judge Mary Gilbride

Judge Janice Gradwohl

Former State Senator Thomas and Linda Hansen

State Senator Matthew Hansen

Deborah Hoback

State Senator Sara Howard

Stacy C. James and Robert C. Ripley

Michael and Wilhelmina Jensen

Former State Senator Jim Jones

In Honor of Tom Kaspar from Gail DeBuse Potter

Bonnie Gerrard Kolowski

Former State Senator Frank Korshoj

In Memory of Former State Senator Bob Kremer

From Beverly Kremer

In Memory Of Former State Senator Lowen Kruse
From Ruth Kruse, Douglas Kruse &
Jo Stockwell

Susan Larson Rodenburg

Ron and Nancy Kvols

Judge Patricia Lamberty

Former State Senator David and Melodee Landis

Former State Senator Dave Maurstad

Former State Senator Carol McBride Pirsch

Former State Senator Janis McKenzie

Former State Senator Jerry and Cheryl Miller

Dr. Kevin Miller

Former State Senator Mick and Katie Mines

Former State Senator PJ Morgan

State Senator David and Kathy Murman

Mark Nelson

Scott and Barbara Oliver

Jim and Mary Owens

Former State Senator David and Lori Pankonin

Former State Senator Shirley Parks

Natalie Peetz

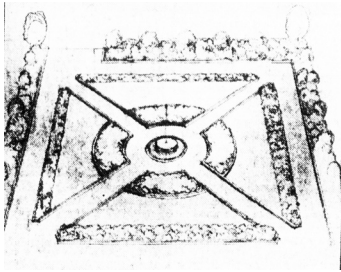
Walter Radcliffe

Reiser Family Fund – Omaha Community
Foundation

Former State Senator Lee and Kay Rupp

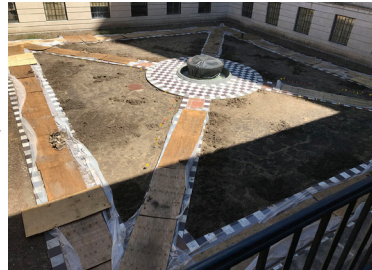
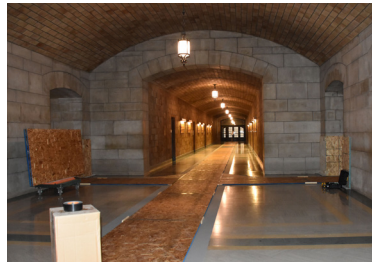
Phyllis Salyards
Leslie and Tom Sams
David and Teresa Schmidt
Former State Senator Edward and Judith Schrock
Sue Schuerman
Former State Senator Lester and Joann Seiler
In Memory of Ardis Shallberg
 From Senator Lynne Walz
Leonard Sloup and Susan Quambusch
Former State Senator Adrian Smith
Former State Senator Nancy Thompson
Former State Senator Don Wesely
Michael and Medelice Wirtz
Arthur Zygielbaum





The sketch above was produced by Ernst H. Herminghaus, Landscape Architect for the Nebraska State Capitol, to show his vision for the courtyard landscapes. This sketch represents a view into the courtyard from second floor galleries and offices. Herminghaus' vision guides current restoration work and future maintenance.

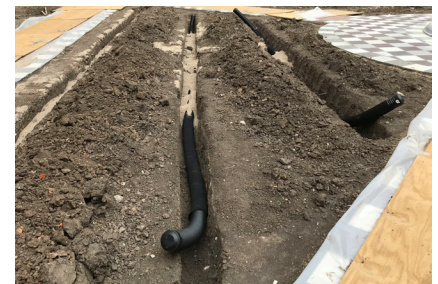
Clockwise, right. The first step in any Capitol project is protecting the building. Contractors protected the floors, walls and walkways on the route of landscaping equipment. The landscaping crew from Campbell's Nursery and Capitol staff discuss the project. Plywood protects the newly restored hard-scape before turf is removed and soil preparation begins.



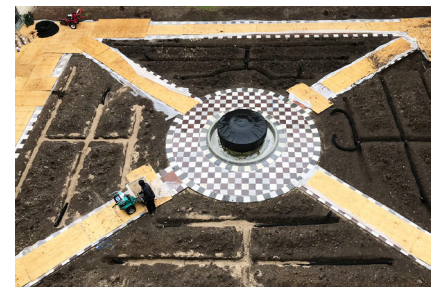
The trencher used to install drainage had to be small enough to go through courtyard doors and maneuver in the small garden spaces.



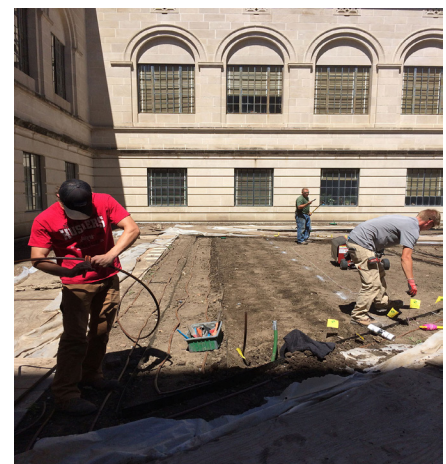
Left and below, each courtyard has four inner beds requiring separate drainage leading to catch basins and drains around the perimeter. Sand covers perforated pipe to help water infiltration and for ease of location during future maintenance.



With drainage in place, metal edging was then installed to define the planting beds, above and right.



Left and below, a much smaller trencher makes shallow trenches which hold the water pipes which feed the underground and surface drip irrigation system being installed, right.





Above and right, when planting time arrives trailer loads of plant material appear on site.



Above, the privets forming the hedge were the first brought in and set in place between the drip irrigation lines.



Above and below, after the petunias were placed, the crew got to work planting privets. Planting as a team -- one person dug holes while another set shrubs in place, and another filled in the soil around the plants.

Below, once the roses, privets and petunias were installed and the soil smoothed and leveled, sod was put down. The presence of sod dramatically changed the appearance of the courtyards. The sod also reduced the amount of dust in the courtyard and allowed Capitol staff to turn on the fountains.



Above, the nearly complete southwest courtyard viewed from a 2nd floor window.

NEBRASKA
CAPITOL
COURTYARD
PROJECT
DONORS

